

Williams-Beuren-Syndrom für genetische

liefert wertvolle Hinweise Grundlage von Musikalität

Erste Eindrücke bei WBS-Musikworkshops

„Kannst Du ein Flugzeug nachmachen?“, „Weißt Du, wie ein Traktor knattert?“ – mit solchen oder ähnlichen Fragen wurde unser Team herzlich von den Kindern mit Williams-Beuren-Syndrom (WBS) begrüßt, die wir auf WBS-Musikworkshops besuchten, um einen Test zur Klangwahrnehmung für unsere Studie zur Musikalität bei WBS durchzuführen. Bemüht uns den „Anforderungen“ zu stellen, versuchten wir anfahrende Autos, Flugzeugmotoren, Martinshörner und ähnliches zu imitieren. Vergnügt stimmten die Kinder mit ein, verteilten neue Nachahm-Aufgaben und verblüfften uns mit ihrer detailgetreuen und authentischen Wiedergabe auch ausgefallener Geräusche. Schnell vergrößerte sich die brummende und quiekende Schar der Kinder, und mit dem Einverständnis der Eltern wollten alle Kinder bei unserem „Hörspiel“ mitmachen.

Außergewöhnliche Sensibilität für Klänge bei Menschen mit WBS

Menschen mit WBS haben einen angeborenen genetischen Defekt auf einem Abschnitt vom Chromosom 7. Zu ihren Besonderheiten zählt eine bereits in den ersten Lebensjahren ausgeprägte starke Sensibilität für unterschiedliche Geräusche und Klänge. Zunächst kann sich diese „auditorische Hypersensibilität“ in Form von Angst vor bestimmten Geräuschen zeigen, v. a. vor brummenden Maschinengeräuschen (z. B. Staubsauger, Rasenmäher, Haartrockner) und vor lauten, schrillen Geräuschen wie Sirenen, Bohrmaschinen etc. In der Regel verringert sich die „Angstkomponente“ der Geräuschempfindlichkeit mit dem Eintreten ins Schulalter, stattdessen bleiben eine hohe Sensibilität, ein Interesse und zum Teil auch eine große Vorliebe für bestimmte Geräusche bestehen. Es kommt sogar vor, dass gerade das Staubsaugen zu einer Lieblingsbeschäftigung wird, oder dass z. B. Kehrmaschinen und Martinshörner eine große Faszination ausüben.

„Hier spielt die Musik!“ - WBS und Musikalität

Der schwer definierbare Begriff „Musikalität“ umfasst zum Einen die erbliche Veranlagung („musikalische Begabung, Talent“) und zum Anderen auch eine Trainingskomponente, ferner auch feinmotorisches Geschick, Konzentrationsvermögen und Verständnis für musikalische Interpretation.

Man kann nun darüber streiten, ob Menschen mit WBS

im klassischen Sinne „musikalisch“ sind: Mit den üblicherweise für Musikstudenten und Profimusiker ausgelegten Standardtests lässt sich die Musikalität bei WBS-Betroffenen nur schwer messen, da hier Notenkenntnisse und eine lange Aufmerksamkeitsspanne vorausgesetzt werden.

Doch eines ist unumstritten: Kinder und Erwachsene mit WBS haben eine ganz besondere Affinität zur Musik! Insbesondere stark rhythmusbetonte Musikrichtungen wie Schlager, Volksmusik, Country und Rock begeistern große und auch schon ganz kleine Menschen mit WBS. Aufgrund dieses natürlichen Interesses an Musik fangen WBS-Kinder oft schon im Kindergartenalter an ein Instrument zu erlernen; besonders beliebt sind Klavier, Keyboard und Schlagzeug. Sie stimmen sofort mit ein, wenn gesungen wird, kennen viele Lieder auswendig (häufig in mehreren Sprachen), trommeln gern und bleiben wie gebannt stehen, wenn eine Musikkapelle durch die Stadt marschiert. Auch wenn das Erlernen eines Musikinstrumentes aufgrund von motorischen und kognitiven Defiziten mit erheblichen Schwierigkeiten verbunden sein kann, spielt Musik für Menschen mit WBS eine ganz zentrale Rolle. Oft werden neue musikalische Ausdrucksformen gefunden, bereits Gehörtes wird komplett ohne Noten nachgespielt, und wenn die Begeisterung vollends überhandnimmt, wird zur Musik getanzt, dass der Boden wackelt (dies wird sehr schön in dem Buch von Oliver Sacks "Der einarmige Pianist. Über Musik und das Gehirn" beschrieben). In den USA haben sich mittlerweile Sommercamps und spezielle Universitäten etabliert, an denen Jugendliche und junge Erwachsene mit WBS mit ihren besonderen Bedürfnissen (vertrautes und fürsorgliches Umfeld, keine Notenkenntnisse erforderlich) Musik studieren können.

„Ich höre was, was Du nicht hörst“ - Individuelle Klangwahrnehmung

Jeder Mensch hört anders und weist ein eigenes Hörprofil auf. Der Kirchenmusiker, Physiker und Hirnforscher Dr. Peter Schneider beschäftigt sich an der Universität



UniversitätsKlinikum Heidelberg

Heidelberg seit vielen Jahren mit dem „musikalischen Gehirn“ und entwickelte einen Test zur individuellen Klangwahrnehmung.

Jeder musikalische Ton ist aus physikalischer Sicht ein Klanggemisch, bestehend aus einem Grundton und einem breiten Spektrum verschiedener Obertöne. Manche Menschen nehmen einen Ton eher als Ganzes wahr und fokussieren vor allem auf dessen Grundton („holistische Hörer“), während andere fast ausschließlich die einzelnen

Obertöne hören („spektrale Hörer“). Beide Hörweisen treten individuell unterschiedlich stark ausgeprägt auf und können auch in verschiedenen Tonhöhenbereichen differieren. Der „Test zur holistischen und spektralen Klangwahrnehmung“ erstellt individuell ein graduelles Profil der Hörweisen in verschiedenen Tonhöhenbereichen.

In Abhängigkeit davon, wie man Töne und Klänge wahrnimmt, werden unterschiedliche Instrumente und

Hörrinde aus dem Gehirn "herausgeschält"



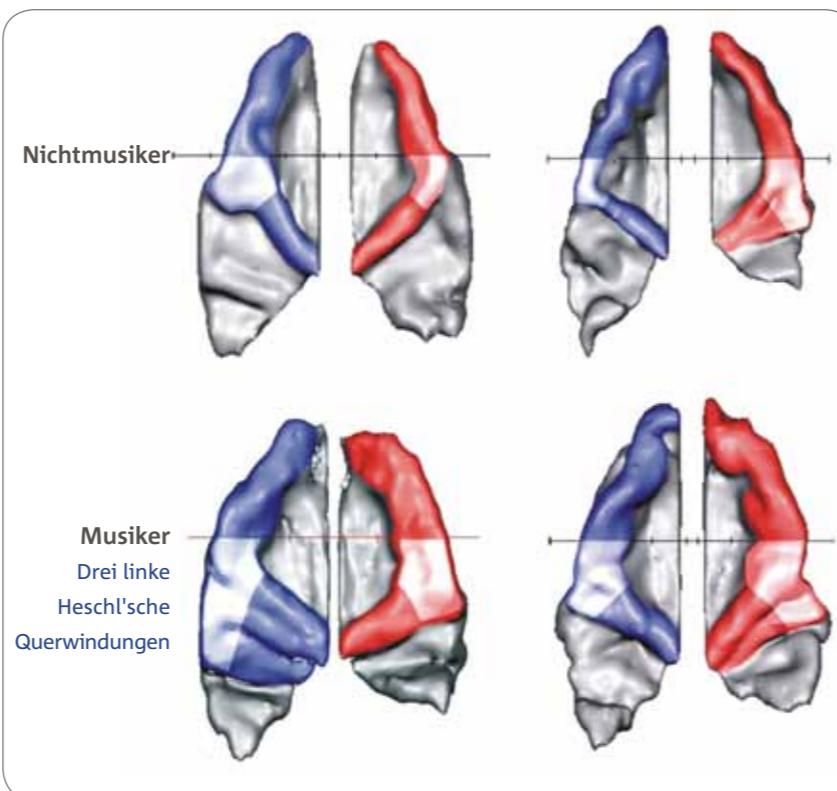
Abbildung 1.

Die dreidimensionale Rekonstruktion der rechten (rot) und linken (blau) Hörrinde von einem MRT-Bild des Kopfes zeigt deutliche individuelle Unterschiede, die die musikalische Begabung und das Hörprofil widerspiegeln. Auf den vier exemplarischen Hörrinden wird erkennbar, dass der seitliche Bereich der sog. „Heschl'schen Querwindungen“ (weiss markiert) bei holistischen Hörern im Seitenvergleich links, bei spektralen Hörern rechts größer ist.

Insgesamt ist bei Musikern die Hörrinde deutlich voluminöser und oft finden sich sogar mehrfache Heschl'sche Querwindungen (beispielsweise hat der holistisch hörende Profimusiker im oben abgebildeten Beispiel drei linke Heschl'sche Querwindungen, der spektrale hörende Musiker hat zwei rechte Heschl'sche Querwindungen).

Holistische Hörer

Spektrale Hörer



Musikrichtungen bevorzugt. Holistische Hörer lieben schnelle, kurze Impulse, virtuosos Spiel und präzise Rhythmen und Instrumente wie Schlagzeug, Klavier und hohe Soloinstrumente (z. B. Trompete). Spektralen Hörern dagegen gefallen lange, getragene Melodien, differenzierte Klangfarben und der Klang von Streich- sowie Blech- oder Holzblasinstrumenten in tieferen Lagen sowie Orgel und Gesang.

Im Rahmen einer Online-Umfrage der Zeitschrift „Audio“ nahmen über 5.700 Menschen an einer Kurzfassung des Tests zur holistischen und spektralen Klangwahrnehmung teil und gaben dabei ihre Hörgewohnheiten und Musikpräferenzen an. Es stellte sich heraus, dass so gut wie alle Jazz-Fans und ein großer Teil der Opernliebhaber sehr stark spektrale Hörer waren, während beispielsweise die „Hardrocker“ und Techno-Fans sehr holistisch hörten.

Neurobiologische Grundlagen des individuellen Hörprofils

Nach Analyse der anatomischen Besonderheiten der Gehirne von über 500 Profimusikern konnte Dr. Schneider feststellen, dass deren Gehirne im Vergleich zu denen von Nichtmusikern eine deutlich größere Hörrinde, häufig mit mehrfachen sog. „Heschl'schen Querwindungen“ aufweisen (in Abbildung 1 rot (rechts) und blau (links) hervorgehoben). In diesen beidseitig oberhalb der Ohren gelegenen Hirnarealen werden Impulse von den Hörnerven aufgenommen und weiterverarbeitet; für die Verarbeitung von akustischen Reizen sind sie also von entscheidender Bedeutung. Ausserdem haben spektrale Hörer im Seitenvergleich eine größere rechte Hörrinde und bevorzugen deshalb wohl schon von „Kindesohren“ an obertonreiche Instrumente wie Saxophon, Orgel und Violoncello. Menschen mit starker Linksasymmetrie hingegen, also mit einer größeren linken Hörrinde, favorisieren Instrumente, die ein präzises „timing“ erlauben, wie beispielsweise Schlagzeug, und/oder einen deutlichen Grundton produ-

individuelle Klangwahrnehmung bei Kindern und jungen Erwachsenen mit WBS und die zugrunde liegenden neurobiologischen Besonderheiten untersucht.

Holistische Klangwahrnehmung bei WBS-Personen

In dem Test zur Klangwahrnehmung nahmen die 27 von insgesamt 29 Studienteilnehmern mit WBS besonders stark die Grundtöne wahr, sie sind also als „extrem holistische Hörer“ einzustufen. Lediglich zwei Probanden mit WBS hörten leicht spektral und bevorzugten auch für WBS „untypische“ (da obertonreiche) Instrumente wie beispielsweise Dudelsack.

Diese nahezu homogene, stark holistische Klangwahrnehmung in der WBS-Gruppe weicht deutlich von der Durchschnittsverteilung ab: Die 75 Kontrollpersonen, die hinsichtlich Alter, Geschlecht und musikalischem Training mit der WBS-Gruppe vergleichbar waren, zeigten eine gleichmäßige Verteilung von holistischer und spektraler Hörweise mit nur sehr wenigen „Extrem-Hörern“.



zieren, wie z.B. Trompete oder Klavier.

Bisher ist es in der Neurowissenschaft umstritten, ob die Besonderheiten in den Gehirnen von Musikern dem intensiven Training zuzuschreiben sind (im Sinne von „das Hirn wie einen Muskel trainieren“), oder ob sie bereits angeboren sind.

Im Rahmen dieser „nature versus nurture“-Debatte (das engl. Wortspiel heißt so viel wie „Veranlagung oder Umwelt“) ist es deshalb besonders spannend, Menschen mit besonderer Begabung und möglichst wenig musikalischem Training zu untersuchen, um festzustellen, ob sie Übereinstimmungen im Erbgut haben, die Rückschlüsse auf die Grundlage von Musikalität erlauben.

Die große Begeisterung für Musik, die wir für einen wichtigen Bestandteil der musikalischen Begabung halten, das gleichzeitig geringe Training im klassischen Sinne und die spezielle genetische Gemeinsamkeit machen Menschen mit WBS somit aus neurobiologischer Sichtweise zu „idealen Studienkandidaten“. Daher hat unser Team die

Impressionen von den Messungen. Alle Versuchsteilnehmer und auch wir hatten eine Menge Spaß!

Die beliebteste Pausenbeschäftigung war die legendäre „Apfel-Schäl-Maschine“. Auch die Eltern kamen nicht ganz „ungeschoren“ davon und mußten vollen Einsatz zeigen...

Hörrinde bei WBS-Personen so groß wie bei Profimusikern

Eine Untersuchung mit der Magnet-Resonanz-Tomographie (MRT), mit der kleinste Strukturen im Gehirn erkennbar werden, zeigte, dass die Hörrinde von WBS-Personen deutlich grösser ist als die von gleichaltrigen und hinsichtlich des musikalischen Trainings vergleichbaren Kontrollpersonen. In der Aufsicht wird erkennbar, dass die Heschl'schen Querwindungen oft beidseitig sogar mehr-

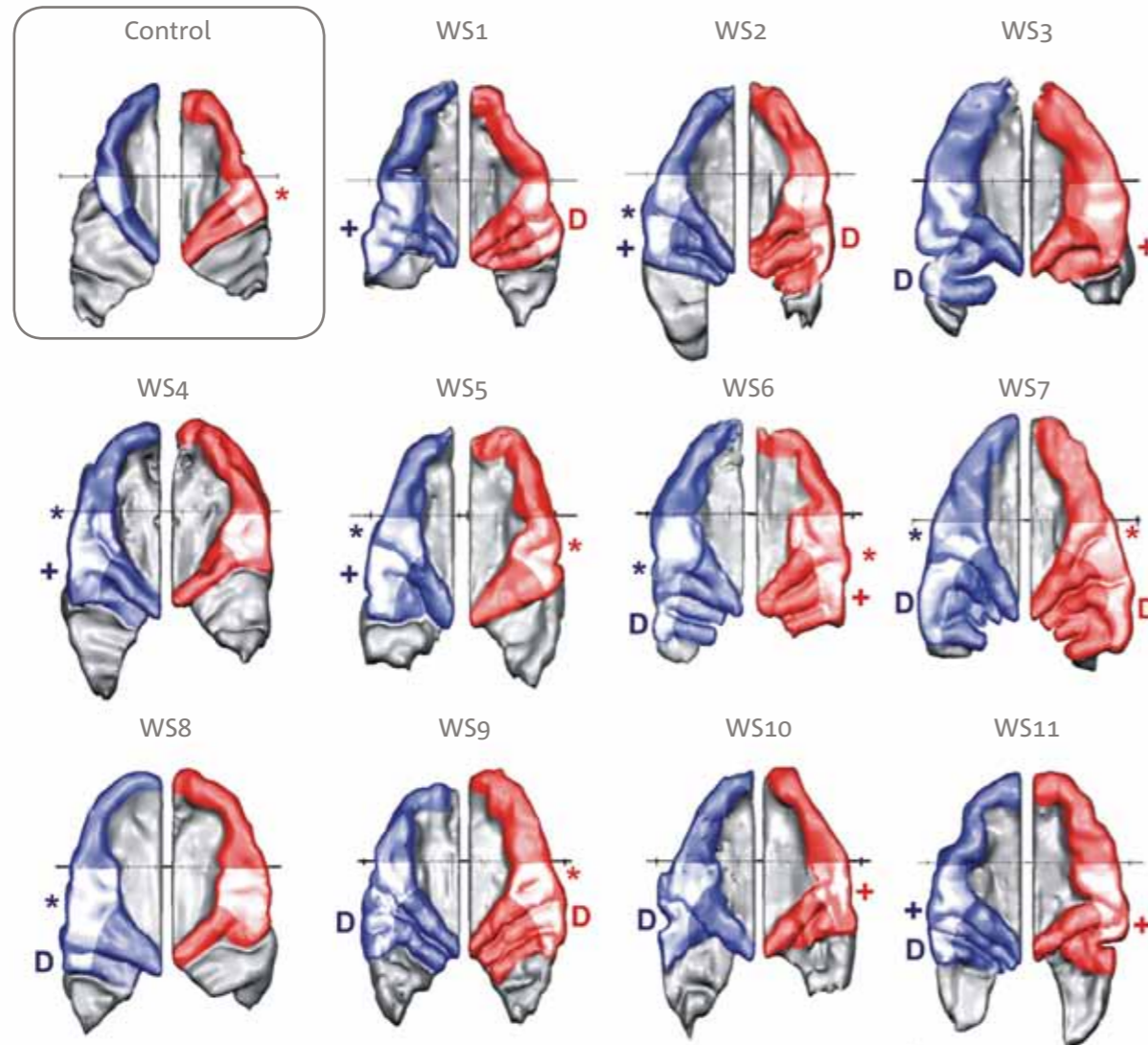


Abbildung 2.

Im Vergleich zu den Kontrollpersonen (control) zeigen die 11 WBS-Testpersonen deutlich vergrößerte Hörrinden mit mehrfach angelegten Heschl'schen Querwindungen (siehe rote und blaue Bereiche).

fach angelegt sind (Abbildung 2).

Eine weitere Auffälligkeit der Gehirnanatomie der WBS-Personen war eine im Seitenvergleich deutlich größere linke Hörrinde. Diese Beobachtung passt zu der nahezu homogenen holistischen Hörwahrnehmung der WBS-Gruppe mit Fokussierung auf Grundton und zeitliche Auslösung; dies sind auditorische Elemente, die vor allem in der linken Hörrinde verarbeitet werden. Insgesamt war das Gesamt-Hirnvolumen der WBS-

Personen um 24 % geringer als bei den Kontrollpersonen (dies ist aus der Literatur bekannt und liegt vor allem an einer Verringerung der weißen Hirnsubstanz im Scheitellappen). Umso erstaunlicher ist es, dass die linke Hörrinde der WBS-Personen im absoluten Vergleich trotzdem 1,6 mal so groß war wie die der Kontrollpersonen. Um eine vollends objektive Vergleichsmöglichkeit zu erhalten, wurden die Daten aller untersuchten Gehirne auf die gleiche Größe umgerechnet („normalisiert“). In dieser Betrachtungsweise war die linke Hörrinde der WBS-Personen im Verhältnis zu den Kontrollpersonen sogar 2,2-fach und die rechte 1,2-fach größer.

Dies sind Werte, die bisher nur von Profimusikern bekannt waren!

Dieser ausgeprägte Größenunterschied der Hörrinde bei den WBS-Personen ist ein Indiz dafür, dass die Größe und Form der Hörrinde nicht Resultat langjähriger Trainings ist, sondern vielmehr der musikalischen Veranlagung zugrunde liegt und eventuell genetisch mitbestimmt wird.

Eine Untersuchung der funktionellen Besonderheiten der WBS-Gruppe beim Verarbeiten von Tönen bestärkte noch die Ergebnisse der Untersuchungen von Klangwahrnehmung und anatomischen Besonderheiten. Hierfür wurde die Magnetenzephalographie (MEG) verwendet. Bei dieser Methode sitzt man unter einer Art „Friseurhaube“ und hört sich passiv verschiedene Töne an (siehe Fotos). Hierbei können minimale Veränderungen der Hirnströme gemessen werden, die durch das Verarbeiten der Töne in der Hörrinde hervorgerufen werden. Die WBS-Gruppe zeigte insgesamt deutlich stärkere Signale in der Hörrinde als die Kontrollgruppe, vergleichbar mit den Signalen von Musikern. Ausserdem war auch hier zu beobachten, dass die Signale der linken Hörrinde der WBS-Personen deutlich stärker waren als die der rechten, was wieder durch die holistische Klangwahrnehmung der WBS-Gruppe und die zugehörige Linksasymmetrie der Hörrinde zu erklären ist.

Literatur

- Wengenroth M, Blatow M, Bendszus M, Schneider P. Leftward Lateralization of Auditory Cortex Underlies Holistic Sound Perception in Williams Syndrome. *PLoS ONE* (2010). <http://www.plosone.org/article/info%3Adoi%2F10.1371%2Fjournal.pone.0012326>
- Schneider P & Wengenroth M. The Neural Basis of Individual Holistic and Spectral Sound Perception. *Contemporary Music Review* (2009)
- Schneider P, Bleack S, Rupp A. Structural, functional and perceptual differences in Heschl's gyrus and musical instrument preference. *Annals of the New York Academy of Science* (2005)
- Schneider P, Sluming V, Roberts N, Scherg M, Goebel R, Specht H, Dosch G, Bleack S, Stippich C, Rupp A. Structural and functional asymmetry of lateral Heschl's gyrus reflects pitch perception preference. *Nature Neuroscience* (2005)
- Tantschinez C. *Audio* (2006). Stuttgart: Motor Press
- Schneider P, Scherg M, Dosch G, Specht H, Gutschalk A, Rupp A. Morphology of Heschl's gyrus reflects enhanced activation in the auditory cortex of musicians. *Nature Neuroscience* (2002)

Danksagung

Wir möchten uns ganz herzlich bei allen WBS-Kindern, deren Geschwistern und besonders auch den Eltern fürs engagierte Mitmachen bedanken! Es hat uns sehr viel Spaß gemacht und wir hoffen auf wieder so rege Teilnahme bei unserer nächsten Studie.

Ganz besonderer Dank gebührt auch dem Bundesverband für WBS, der uns ausgezeichnet unterstützt hat!

Und wie geht's weiter?

Wir planen, im Herbst 2011 mit einer neuen Studie zur emotionalen Verarbeitung von Musik und Klängen bei WBS zu beginnen. Hier werden wir dem Gehirn mit der funktionellen Magnetresonanztomographie (fMRT) beim „Hören und Fühlen zuschauen“, während verschiedene Musikstücke und Klangbeispiele im Gerät präsentiert werden. Die Messungen werden voraussichtlich in Basel und Heidelberg stattfinden.

Alle Interessierten (auch die „alten Hasen“ von der ersten Studie!) dürfen gerne mitmachen! Geschwister und Freunde sind ebenfalls herzlich willkommen – so wird die Messung zu einem spannenden Event, an dem wir alle eine Menge Spaß haben werden!

Kontakt

Rückfragen und Studienanmeldungen können Sie gerne richten an:

→ Dr. med. Martina Wengenroth
Abteilung Neuroradiologie Heidelberg
Im Neuenheimer Feld 400
69120 Heidelberg
Email: martina.wengenroth@med.uni.heidelberg.de

Rückfragen bezüglich des Tests zur holistischen und spektralen Klangwahrnehmung bitte an:

→ Dr. rer. nat. Peter Schneider
Email: peter.schneider@med.uni.heidelberg.de

Leftward Lateralization of Auditory Cortex Underlies Holistic Sound Perception in Williams Syndrome

Martina Wengenroth^{1*§}, Maria Blatow^{1§}, Martin Bendszus¹, Peter Schneider^{1,2}

1 Department of Neuroradiology, University of Heidelberg Medical School, Heidelberg, Germany, **2** Department of Neurology, Section of Biomagnetism, University of Heidelberg Medical School, Heidelberg, Germany

Abstract

Background: Individuals with the rare genetic disorder Williams-Beuren syndrome (WS) are known for their characteristic auditory phenotype including strong affinity to music and sounds. In this work we attempted to pinpoint a neural substrate for the characteristic musicality in WS individuals by studying the structure-function relationship of their auditory cortex. Since WS subjects had only minor musical training due to psychomotor constraints we hypothesized that any changes compared to the control group would reflect the contribution of genetic factors to auditory processing and musicality.

Methodology/Principal Findings: Using psychoacoustics, magnetoencephalography and magnetic resonance imaging, we show that WS individuals exhibit extreme and almost exclusive holistic sound perception, which stands in marked contrast to the even distribution of this trait in the general population. Functionally, this was reflected by increased amplitudes of left auditory evoked fields. On the structural level, volume of the left auditory cortex was 2.2-fold increased in WS subjects as compared to control subjects. Equivalent volumes of the auditory cortex have been previously reported for professional musicians.

Conclusions/Significance: There has been an ongoing debate in the neuroscience community as to whether increased gray matter of the auditory cortex in musicians is attributable to the amount of training or innate disposition. In this study musical education of WS subjects was negligible and control subjects were carefully matched for this parameter. Therefore our results not only unravel the neural substrate for this particular auditory phenotype, but in addition propose WS as a unique genetic model for training-independent auditory system properties.

Citation: Wengenroth M, Blatow M, Bendszus M, Schneider P (2010) Leftward Lateralization of Auditory Cortex Underlies Holistic Sound Perception in Williams Syndrome. PLoS ONE 5(8): e12326. doi:10.1371/journal.pone.0012326

Editor: Jun Yan, Hotchkiss Brain Institute, University of Calgary, Canada

Received: April 14, 2010; **Accepted:** July 29, 2010; **Published:** August 23, 2010

Copyright: © 2010 Wengenroth et al. This is an open-access article distributed under the terms of the Creative Commons Attribution License, which permits unrestricted use, distribution, and reproduction in any medium, provided the original author and source are credited.

Funding: M. Blatow was supported by the Olympia-Morata-Program of the University of Heidelberg Medical Faculty. The funders had no role in study design, data collection and analysis, decision to publish, or preparation of the manuscript.

Competing Interests: The authors have declared that no competing interests exist.

* E-mail: martina.wengenroth@med.uni-heidelberg.de

§ These authors contributed equally to this work.

Introduction

Musical sound perception is associated with considerable inter-individual variability. In the general population there is an even distribution between two preferential listening modes, independent of age, gender or degree of musical training: Holistic listeners perceive the sound as a whole with emphasis on the fundamental tone, whereas spectral listeners decompose the sound into its single harmonic constituents [1]. Individual sound perception also determines preference for certain musical instruments and music styles: Spectral listeners favor overtone-rich instruments (e.g. organ, saxophone) as well as opera and jazz music, whereas dominant holistic listeners prefer high-pitched and/or percussive instruments (e.g. trumpet, piano, drums) and rhythmic beats [2]. The neural substrates of individual sound perception preference were identified in the functional and morphological lateralization of the auditory cortex (AC), particularly the relative size, gyrification and shape of the Heschl's gyrus (HG) [1,3]. However, whether such macroscopic and functional lateralization reflects genetic predisposition or training-induced neuroplasticity has been much

debated in the neuroscience field and so far remained a matter of unresolved controversy.

In order to study the potential contribution of genetic factors to the auditory profile we investigated individual sound perception as well as morphology and function of the auditory cortex in subjects with Williams-Beuren syndrome (WS) and compared the findings with control subjects, who were well-matched for the amount of musical training.

WS is a rare multisystemic developmental disorder caused by a hemizygous microdeletion on chromosome 7q11.23 (OMIM #194050) [4]. Until now approximately 28 genes have been identified within this critical region and some of the WS typical features could be ascribed to the deletion of specific genes. In particular, vascular pathologies such as supravalvular aortic stenosis have been attributed to haploinsufficiency of the elastin gene (ELN). The deletion of syntaxin 1A (STX1A), LIM kinase 1 (LIMK1), CAP-GLY domain-containing linker protein 2 (CLIP2), general transcription factor II-I (GTF2I) and general transcription factor II-I repeat domain (GTF2IRD1) has been repeatedly suggested to be associated with the characteristic intellectual

profile [4–7]. The latter includes cognitive and psychomotor deficits [8,9], which stand in marked contrast to the unusual fascination and intense engagement with rhythm and music [10–12]. The vast majority of WS children participate in musical education and instrument playing; they show heightened emotional reactions to music and express high rhythmic creativity [10–12].

In brief, we discovered a characteristic sound perception profile in WS, associated with structural and functional augmentation of the left AC. Given that the genetic defect is well defined and musical training in affected subjects is negligible, WS offers a unique opportunity to probe training-independent auditory system properties.

Results

Holistic sound perception preference in WS

In order to investigate sound perception in WS we performed a standardized psychoacoustic test with 29 WS subjects and 75 healthy well-matched controls (see **Table 1** for demographic data). This test included 12 representative harmonic complex tone pairs with varying parameters of pitch and timbre (*i.e.* number, height and frequency of harmonics), which were derived from an extensive psychoacoustic test battery previously published [1] and allowed separation of dominant holistic (sound perception index $\delta < 0$) from spectral ($\delta \geq 0$) listeners (see **Materials and Methods** for details). This short test version had a high correlation with the full original test ($r = 0.90$, $p < 0.0001$), as assessed in 64 control subjects.

In keeping with results of previous studies, the control group of this experiment showed an even distribution of holistic (C_H) and spectral (C_{SP}) listeners (C_H : mean $\delta = -0.59 \pm 0.06$; C_{SP} : mean $\delta = 0.61 \pm 0.05$; **Fig. 1a, Table 1**). In striking contrast to the even distribution of C_H and C_{SP} listeners within the control group, WS subjects showed extreme and almost exclusive holistic sound perception (all controls: mean $\delta = -0.11$ vs. WS: mean $\delta = -0.73 \pm 0.07$; $p < 0.0001$; **Fig. 1a, Table 1**). The sound perception index was distinctly shifted towards the left end in favor of extreme holistic sound perception in WS subjects, even if compared only to the holistic listeners of the control group. Only two out of 29 WS individuals scored within the lower spectral range. The sound perception test was repeated at a later time point

in 7 WS individuals; the test-retest reliability was very high ($r = 0.95$; $p < 0.0001$). Thus, at the behavioral level WS individuals exhibited extreme holistic sound perception, representing a strong deviation from the general population.

Left-dominant asymmetry of auditory evoked fields (AEF) in WS

Magnetoencephalography (MEG) was performed to measure immediate auditory evoked fields (AEF) during passive listening to instrumental tones. Spatiotemporal source modeling with one dipole in each hemisphere was used to calculate the auditory evoked middle latency responses (mAEF) of AC. In line with previous investigations [1,3] a characteristic asymmetry of the mAEF peaking 50 ms after tone onset (P50) was observed in the control groups. Namely, the P50 dipole amplitudes were increased in the left AC in C_H listeners, whereas C_{SP} listeners exhibited larger right AEF, typically with multiple peaks (**Table 2, Fig. 1b**).

In a second step, source modeling with two dipoles in each hemisphere was used to separate the characteristic responses from the primary core areas of anterior Heschl's gyrus from the secondary responses of the surrounding belt areas. Characteristic differences of the primary and secondary responses were detected with respect of curve progression, amplitude, latency and width of the middle and late auditory evoked field and the superimposed sustained field components (**Fig. 1c,d**).

In the WS group, both early and late source activities were markedly lateralized to the left hemisphere, reflecting their strong holistic sound perception. Furthermore in WS subjects the response of secondary auditory cortex of the left hemisphere showed a strong sustained field component following the onset response, which was 3.1-fold larger as compared to controls (average amplitude in time range 100–500 ms: 15.4 nAm (WS) vs. 4.9 nAm (controls); **Fig. 1c,d**). This effect was not observed in the right hemisphere. Additionally, in comparison to the control group left-hemispheric dipole amplitudes were found to be increased by 103% as compared to C_{SP} and 47% as compared to C_H listeners (**Fig. 1b, Table 2**). It is of further note that P50 and N100 latencies were bilaterally decelerated in the WS population and not in the control group (right: P77, N135, left: P90, N175).

Table 1. Demographic and psychoacoustic data.

	C_{SP}	C_H	WS	P (WS vs. C_{SP})	p (WS vs. C_H)
Sound perception test					
Sex (female/male)	16/11	27/21	14/15		
Age (yrs)	16.8 ± 0.7	16.5 ± 0.5	15.0 ± 1.4	0.09	0.131
Musical training (hrs/d)	0.6 ± 0.2	0.5 ± 0.2	0.4 ± 0.1	0.02	0.10
Sound perception index (δ)	0.61 ± 0.05	-0.59 ± 0.06	-0.73 ± 0.07	<0.0001	0.03
Neuroimaging (MEG, MRI)					
Sex (female/male)	5/5	7/3	6/5		
Age (yrs)	18.7 ± 1.6	18.5 ± 1.6	17.0 ± 2.7	0.90	0.95
Musical training (hrs/d)	0.5 ± 0.2	0.5 ± 0.1	0.4 ± 0.2	0.96	0.94
Sound perception index (δ)	0.58 ± 0.10	-0.63 ± 0.12	-0.88 ± 0.06	<0.0001	0.05

Sound perception: Index $\delta = (SP - H)/(SP + H)$ according to the number of perceived holistic (H) and spectral (SP) items of the sound perception test [1]. Age (years), musical expertise (hours of training per day) and sound perception index (δ) are presented as mean ± standard error (s.e.m.). ANOVA: p -value of WS vs. control group of spectral listeners (C_{SP}) and WS vs. control group of holistic listeners (C_H).

doi:10.1371/journal.pone.0012326.t001

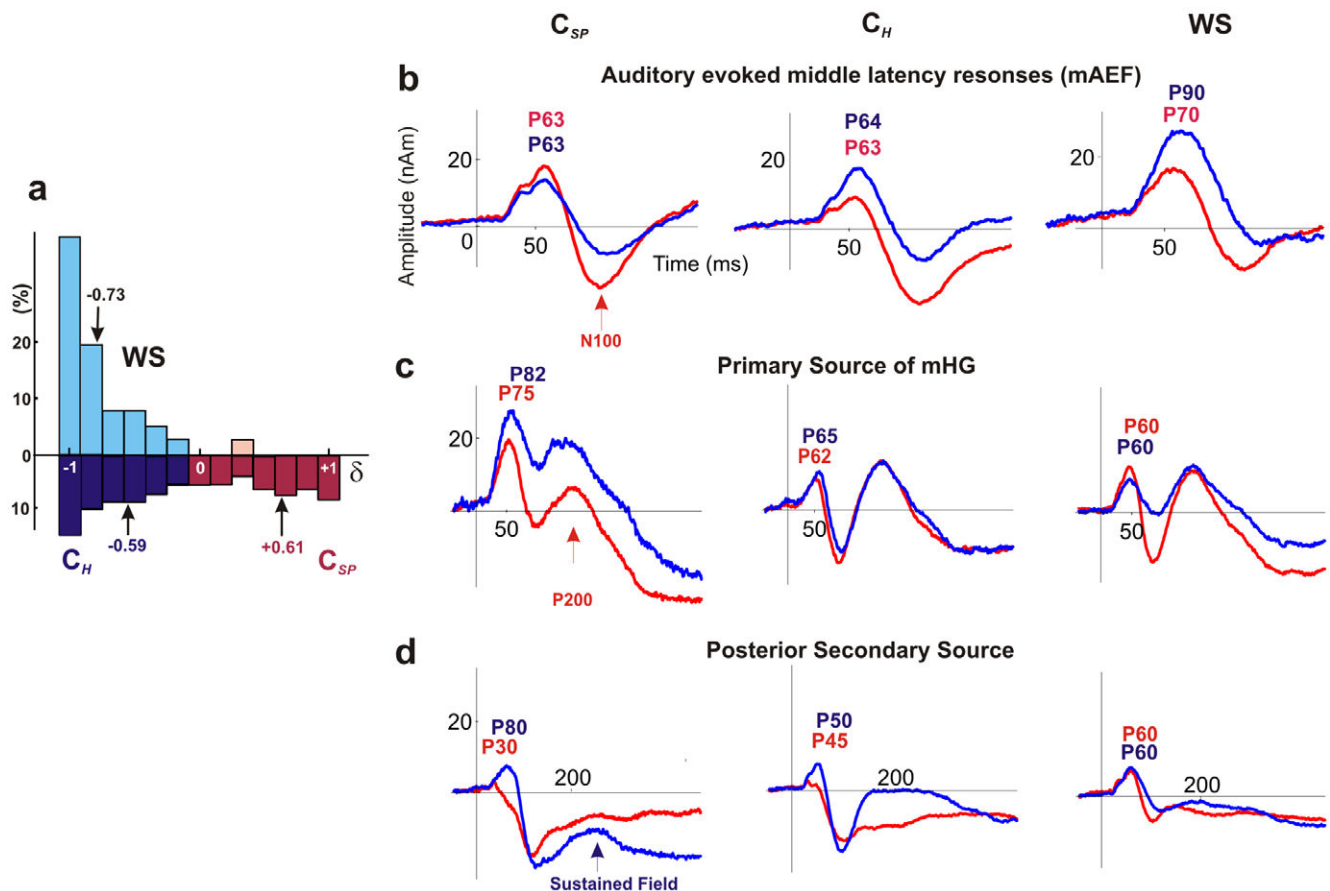


Figure 1. Holistic sound perception and functional leftward lateralization in WS. (a) Sound perception index (δ) of spectral (C_{SP} ; red) and holistic listeners (C_H ; blue) of the control group (dark colors) and the WS group (light colors). Mean δ of groups are indicated (arrows). (b-d) Averaged auditory evoked fields (AEFs) of three experimental groups: Left-hemispheric: blue, right-hemispheric: red traces. Peak latency in ms relative to tone onset. (b) Middle latency components of auditory evoked field (mAEF) modeled by one fixed dipole in each hemisphere at $|x| = 45$, time range 0–200 ms (c-d). Late auditory evoked field modeled by two fixed dipoles in each hemisphere, time range 0–500 ms (c) a primary source seeded in the first transverse Heschl's gyrus, and (d) a second source seeded in the posterior part of HG duplications.
doi:10.1371/journal.pone.0012326.g001

Increased volume of auditory cortex and structural leftward asymmetry in WS

High-resolution magnetic resonance imaging (MRI) was performed at 3 Tesla. T1-weighted three-dimensional MR images of the brain were individually analyzed for gray matter volumes of the whole brain and the AC before and after normalization into

Talairach (TAL) space (see **Materials and Methods** for details; **Fig. 2 and 3**).

In keeping with previous volumetric studies by numerous authors [9,13,14,15], the WS group in our experiment exhibited reduced total brain volume by 24%, which was primarily attributable to a disproportionate white matter reduction (**Fig. 4c, Table 3**). In

Table 2. MEG source activity.

	C_{SP}	C_H	WS	p (WS vs. C_{SP})	p (WS vs. C_H)
N	10	10	9		
P50 Amplitudes (nAm)					
Right AEF	23.1±3.3	15.2±1.9	20.7±2.8	0.45	0.09
Left AEF	17.8±2.1	24.5±4.7	36.1±3.2	<0.0001	0.02
Dipole Localization (mm)					
Right hemisphere	13.2±1.7	12.3±1.8	25.5±1.7	0.0086	0.0077
Left hemisphere	19.6±1.6	22.8±1.7	29.5±1.9	0.003	0.018

Source activity: Dipole amplitudes of auditory evoked P50 responses (nAm). Dipole localization: normalized y-coordinate in anterior-posterior direction (mm). ANOVA: p -value of WS vs. spectral listeners of control group (C_{SP}) and WS vs. holistic listeners of control group (C_H).

doi:10.1371/journal.pone.0012326.t002

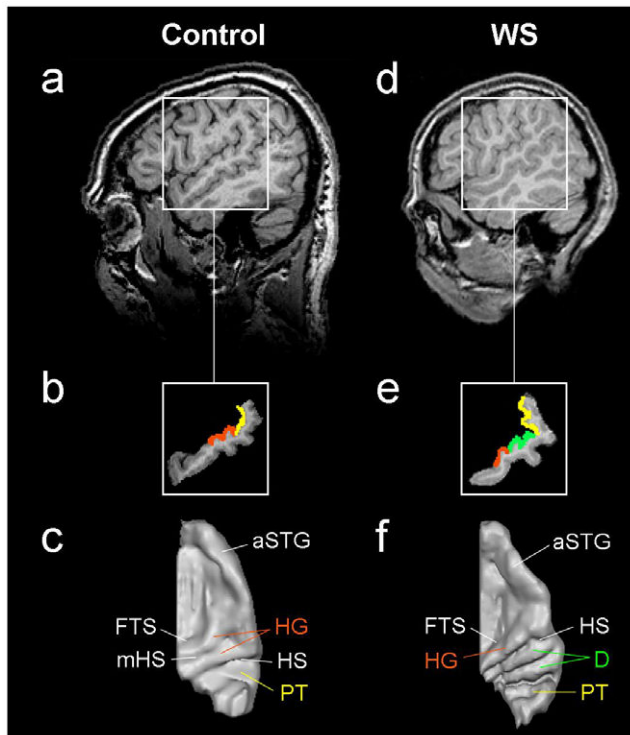


Figure 2. Anatomical landmarks of the auditory cortex. Auditory cortex (AC) of one control person (a–c) and one WS subject (d–f). Sagittal MR image at TAL $x=50$ (a,d; left side of the image is the anterior part of the brain). Segmented STG (b,e) including Heschl's gyrus (HG; marked orange), planum temporale (PT; marked yellow) and two posterior duplications of HG in the WS subject (D; marked green). Three-dimensional surface reconstruction of right AC (c,f) reveals anatomical features and individual peculiarities such as D (f) or medial Heschl's sulcus (mHS; c). FTS = first transverse sulcus; HS = Heschl's sulcus; aSTG = anterior superior temporal gyrus. doi:10.1371/journal.pone.0012326.g002

contrast, the AC of WS subjects showed markedly enhanced gyrification and increased gray matter volume, regarding averaged landmarks (Fig. 4a), probabilistic maps (Fig. 4b) and individual morphology of HG (Fig. 3, 4c).

After adjusting for total brain volume differences, HG volume was 2.2-fold increased in the left and 1.2-fold in the right hemisphere in WS as compared to control subjects. Remarkably, left HG volumes were still 1.6-fold increased in WS subjects even before taking brain volume differences into account ($F_{(1,19)} = 19.59$, $p < 0.0005$) and the volume of the right HG matched that of the controls (Fig. 4c, Table 3).

Interestingly, we very often observed multiple duplications with three or four transverse HG in WS subjects, which occurs only rarely in the general population. The incidence of complete posterior HG duplications was 45% in WS compared to 18% in controls. If duplications were included in the morphometric analysis, volume changes of HG were even more pronounced (Fig. 4c, Table 3).

In order to probe functional significance of HG duplications, functional MRI (fMRI) with auditory stimulation using instrumental and complex tones (in analogy to the MEG stimuli employed in the study) was performed on a proof of principle basis in three WS individuals with pronounced posterior duplications. In all cases blood oxygen level dependent (BOLD) activations extended to posterior duplications, suggesting their implication in auditory processing (Fig. 5). In this context it is of note that the

averaged MEG dipoles, which localize the center of primary activation during auditory processing, were shifted towards posterior parts of the AC by 9 mm in the left and 13 mm in the right hemisphere of WS subjects.

Discussion

Individuals with WS are known to be mesmerized by music and to show heightened emotional reactions to sounds of all kinds [10,11]. Their musical engagement and receptivity almost uniformly surpasses that of typically developing age peers. WS subjects also possess a remarkable ability to recognize and imitate environmental sounds, such as cars, vacuum cleaners or lawnmowers [10]. Given that the auditory phenotype is strikingly homogenous across the group and the genetic defect is well characterized, WS offers a rare opportunity to study the relationship between genes, behavior, brain morphology and function. In the present study, we employed a multimodal psychoacoustic and neuroimaging approach and found extreme holistic sound perception in WS, coupled with functional and structural leftward asymmetry of AC.

Extreme and almost uniform holistic sound perception in WS represents a significant deviation from the distribution of sound perception in the general population. Strong holistic sound perception is in agreement with the fact that the WS individuals express high rhythmic creativity [12] and are particularly fond of rhythmic and percussive instruments such as drums, keyboard and piano [16].

A number of groups have previously analyzed brain morphology in WS and consistently found total brain volume reduction, mainly attributable to reduced parietal and occipital lobe volumes [8,15–19]. On the other hand increased gyrification and cortical complexity were repeatedly observed [14,17–24]. Additionally, several brain areas have been reported as relatively preserved, such as superior temporal gyrus (STG), amygdala, orbitofrontal cortex and posterior vermis of the cerebellum; often accompanied by a left-hemispheric dominance [13,15,17–21,24,25]. The relatively preserved volumes and greater cortical complexity of structures along the Sylvian Fissure were proposed to underlie the distinctive linguistic and auditory strengths in WS [14,18,21–23]; however, this hypothesis has not been sufficiently corroborated so far.

The auditory phenotype and musical abilities in WS have been characterized by a number of investigators [9,26,27] and some groups have attempted to correlate the unusual auditory phenotype with a neural substrate [11,15,28,29]. *Post mortem* studies on a small collection of WS brains have found preserved size of auditory cortex [30]. But MRI-based neuroimaging studies that employed group analysis methods such as voxel based morphometry (VBM) could not corroborate such findings. It is a known caveat of the VBM technique that the considerable inter-individual variability of cortical and sulcal structures might be obscured [24,31]. Very recently Martens et al. employed an individual analysis method and found significant volume increase of the left PT in a subgroup of WS subjects who demonstrated specific musical strengths [15]; but this finding remained unexplained so far.

In the present study we applied an individual analysis method of high resolution MRI images to account for the differences of peripheral cortical structures such as the HG. In agreement with previous individual HG morphometry in musicians, HG was larger in the right hemisphere in C_{SP} listeners of the control group and more pronounced in the left hemisphere in C_H listeners. In WS subjects we found strong leftward HG asymmetry correlating

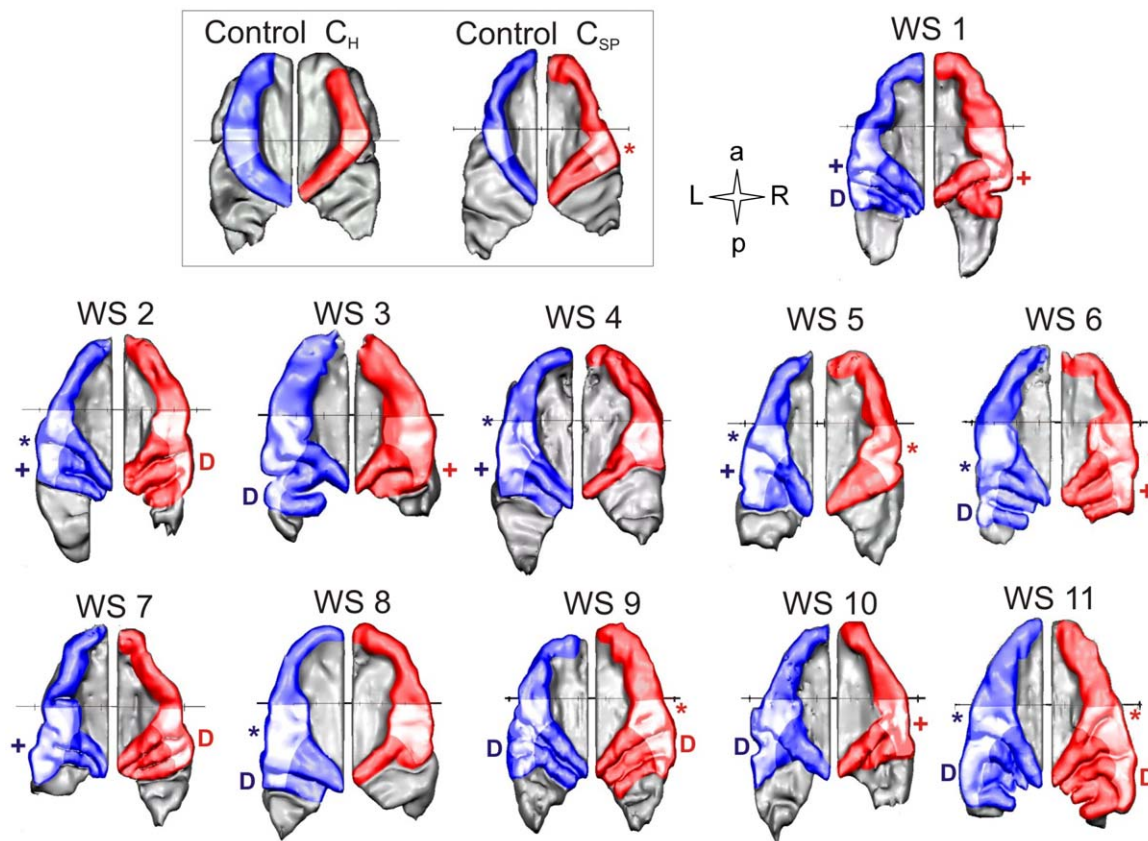


Figure 3. Increased gyrification of the auditory cortex in WS. Individual segmentation reveals distinct morphology of right (red) and left (blue) auditory cortex (AC) of WS subjects. In comparison, representative AC examples of one holistic listener (C_H) and one spectral listener (C_{SP}) of the control group are depicted. Lateral pitch sensitive regions of the HG are highlighted and complete posterior duplications are marked (D), if present. The position of the anterior commissure is indicated as a black line. Sulcus intermedius (*); medial duplication (+).
doi:10.1371/journal.pone.0012326.g003

with their extreme holistic sound perception. Furthermore, HG volumes exceeded by far those of normal controls, identifying a very probable neural basis of the distinctive auditory skills of WS individuals. This finding bore up against brain normalization, that is left HG volumes in WS subjects were also increased before taking total brain volume reduction into account. Such over-proportional HG volumes can be typically encountered in professional musicians and talented music students [3].

So far it remained a matter of unresolved controversy in the neuroscience community, whether such cortical volume differences in the AC reflect neuroplastic effects due to intense training [32,33] or represent an innate predisposition to a particular talent, *i.e.* musicality. Schneider et al.'s previous work suggests that AC volume correlates with musical aptitude independent of the degree of musical training [3]. The present results corroborate this idea, since musical training was negligible in WS participants and the control subjects have been specifically matched for this parameter.

At the functional level auditory evoked fields measured by MEG showed the expected rightward asymmetry in C_{SP} listeners and leftward asymmetry in C_H listeners of the control groups. Such relative auditory lateralization based on individual sound perception has been previously reported [1] and originates from dominant processing of temporal resolution and holistic sound perception in left AC [1,34] and spectral as well as fine pitch resolution in right AC, respectively [35]. In agreement with the psychoacoustic test results, we found a strong functional leftward asymmetry in the WS group as an electrophysiological correlate of

their extreme holistic sound perception. In addition to this *relative* asymmetry, amplitudes of left AEF in WS subjects were increased in *absolute* terms to almost twice the size as compared to normal controls. Since equivalent P50 amplitudes have been reported for professional musicians [3], increased left auditory responses in WS individuals might be pointing to a putative electrophysiological substrate of their particular musicality.

In the general population the PT [36], which is the plane cortical structure posterior to the HG, is typically more extended in the left hemisphere compared to the right due to a generally smaller left HG [37,38]. It has been independently reported by several authors that this PT asymmetry is often reduced in WS [17,18,22,24]. But so far, there was no satisfactory explanation for this phenomenon. The present study is the first to identify that the reduced PT asymmetry is in fact consequential to increased left HG volume. Unfortunately, calculated HG volumes cannot necessarily be compared to all previous studies on HG volumes due to the inconsistent definition of anatomical AC landmarks. Martens et al. did not find any differences of the "primary AC" volumes but revealed increased volumes of the PT in WS in comparison to controls (as opposed to increased HG in our study). However, the authors employed different definitions of AC structures and discuss restricted comparability as a critical point. We believe that their data are well in line with ours since structures they categorized as PT (*i.e.* partial HG duplications) would have been ascribed to HG or HG duplications according to our definition. Interestingly in this respect is that Martens et al. also

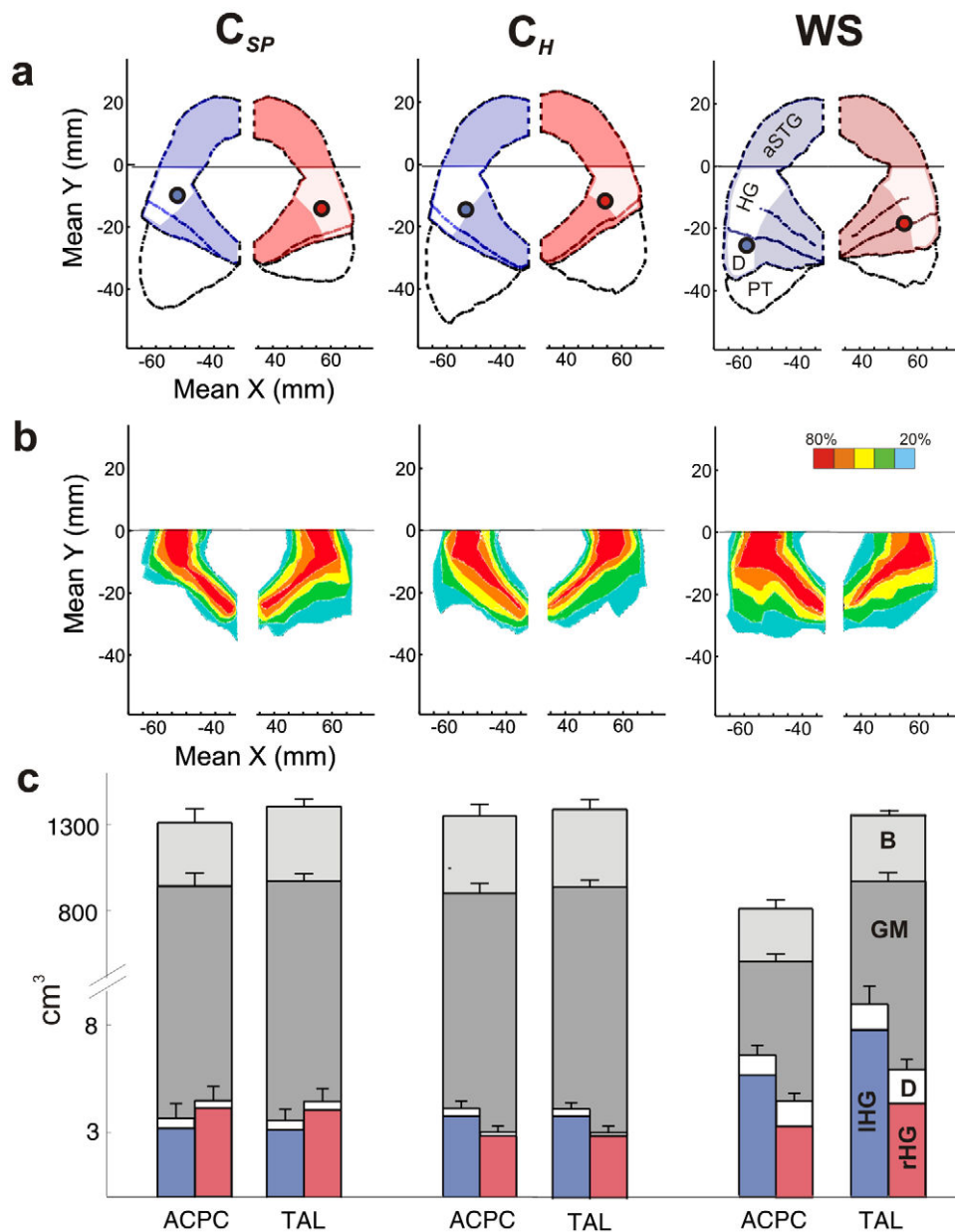


Figure 4. Increased gray matter volume of the auditory cortex and higher incidence of posterior duplications in WS subjects. (a) Averaged individual AC landmarks and MEG dipoles (filled circles) (b) Probability maps of HG including local duplications anterior to the first complete Heschl's sulcus. The number of overlapping voxels is color coded, *i.e.* red means that >80% of the brains overlapped in this voxel. (a,b) Plots in xy-Talairach (TAL) stereotaxic coordinates. (c) Morphometry of whole brain (B, light grey), grey matter (GM, medium grey), left HG (blue) and right HG (red) before and after normalization. ACPC = plane of anterior and posterior commissure; a = anterior; p = posterior; r = right; l = left; aSTG = anterior supratemporal gyrus; HG = Heschl's Gyrus; D = complete posterior HG duplication; PT = planum temporale; B = total brain volume; GM = gray matter.

doi:10.1371/journal.pone.0012326.g004

found leftward asymmetry (of the planum temporale) in a subgroup of particularly musical WS subjects, which is in accordance with our results [15].

We based our definitions of AC landmarks on results of cytoarchitectonic studies that demonstrated high inter-individual variability of the anatomical borders between the primary and the secondary auditory cortex [39,40], which cannot be distinguished by morphological criteria alone. In order to estimate the borders of the primary and secondary AC we employed functional localizers and probability maps according to well-established landmarks [41–43]. Roughly, the primary AC is located within the medial

two thirds of HG [44] and the secondary AC includes surrounding belt areas, particularly lateral areas of HG and posterior HG duplications. Evidently, consistent application of AC structures would facilitate the comparability of data across studies and would be desirable in the future.

A further remarkable finding in the present study was increased gyrification of the HG, *i.e.* higher occurrence of complete posterior HG duplications. If these were included into morphometric analysis, volume changes of HG were even more pronounced. The role of posterior HG duplications has not been sufficiently addressed in the literature as yet. An increased incidence of HG

Table 3. MRI morphometry.

	C_{SP}	C_H	WS	p (WS vs. C_{SP})	p (WS vs. C_H)
N	10	10	11		
Volumes (cm³)					
TAL					
B	1358±25	1349±33	1319±21	0.25	0.45
GM	880±20	863±20	869±25	0.73	0.85
rHG	4.1±0.6	2.9±0.3	4.2±0.5	0.86	0.044
rHG incl. D	4.5±0.5	3.1±0.3	5.8±0.4	0.054	<0.0001
lHG	3.2±0.3	3.8±0.2	7.6±0.9	0.0001	0.0004
lHG incl. D	3.6±0.5	4.2±0.3	8.8±0.8	<0.0001	<0.0001
ACPC					
B	1298±47	1338±41	1000±32	<0.0001	<0.00001
GM	863±35	852±27	653±21	<0.0001	<0.0001
rHG	4.1±0.7	2.8±0.3	3.2±0.4	0.26	0.47
rHG incl. D	4.5±0.6	3.0±0.3	4.4±0.4	0.9	0.0068
lHG	3.2±0.40	3.8±0.21	5.6±0.4	0.0003	0.0005
lHG incl. D	3.7±0.7	4.1±0.4	6.5±0.5	0.0023	0.0006
Frequency of D (R/L)	3/2	1/1	5/5		

Mean volumes (cm³) ± s.e.m. before (in plane of anterior and posterior commissure, ACPC) and after Talairach normalization (TAL). B = total brain volume; GM = gray matter; rHG/lHG = right and left Heschl's Gyrus; D = posterior HG duplications. ANOVA: p -value of WS vs. C_{SP} and WS vs. C_H . doi:10.1371/journal.pone.0012326.t003

duplications has been reported in subjects with dyslexia [45] but remained unexplained so far. Whether to attribute such duplications to the HG or to be part of the planum temporale is discussed controversially in the field [15,46]. In our study, the dorsal shift of averaged MEG dipoles and the localization of BOLD-activations indicated that HG duplications were implicated in early auditory processing. Further investigations on a larger sample set are certainly warranted in order to fully understand the structure-function relationship of HG and its duplications and are currently underway in our laboratory.

A limitation of our study is the relatively small sample size for neuroimaging tests, which is mainly attributable to low incidence of WS, reduced attention span of subjects and frequent MRI contraindication (because of *e.g.* aortic valve prostheses or pacemakers). In addition we applied an early age cut-off in order not to interfere with age related brain volume reduction. WS subjects were recruited over a period of more than two years. However, our data showed very low variance and the group was extremely homogenous. Due to the hypothesis-driven approach, individual analysis method (not group averages) and homogenous data we are confident that the number is sufficient to validate our results.

In brief, we propose WS as a unique genetic model to investigate training-independent auditory properties. Additional studies which take candidate genes from the WS critical region into consideration will lead the way to extend our understanding of the genetic influence on musicality.

Materials and Methods

Participants

Children and adolescents with a clinical diagnosis of WS were recruited on seminars for affected families and via an article on the German Williams syndrome website [47] over a period of more

than two years. In order to avoid potential confounds with age related brain volume reduction only subjects under the age of 39 years were included.

A group of 36 WS subjects participated in a psychoacoustic sound perception test. In 7 WS subjects who were not able to fully comprehend the psychoacoustic test, the sound perception data could not be analyzed (not included in **Table 1**). A subgroup of 12 WS individuals participated in further neuroimaging studies including magnetic resonance imaging (MRI) and magnetoencephalography (MEG). Two participants had to be excluded from MEG analysis due to severe metal artifacts caused by dental braces. The MR image quality of one WS child (who was able to perform MEG) was too poor for further analysis due to movement artifacts. In 3 WS individuals it was possible to obtain functional MRI (fMRI) with auditory stimulation.

For psychoacoustic testing and neuroimaging, 20 control subjects were matched group-wise for sex, chronological age and daily hours of musical training. The control group contained 6 unaffected brothers and sisters of WS subjects. To increase statistical power of the differences found in the sound perception test, we included psychoacoustic data of 64 participants, which we selected from a previous study according to comparable demographic characteristics [1]. Control subjects were separated by their sound perception index (δ) into dominant spectral (C_{SP}) or holistic listeners (C_H). Demographic data are summarized in **Table 1**. Experimental procedures were approved by the Ethics committee of the University of Heidelberg and all participants (or parents, respectively) provided written informed consent.

Sound perception test

We tested dominant sound perception with a representative subset of 12 tone pairs selected from an extensive psychoacoustic test previously published [1]. This short test version of three minutes duration required only a short attention span and was

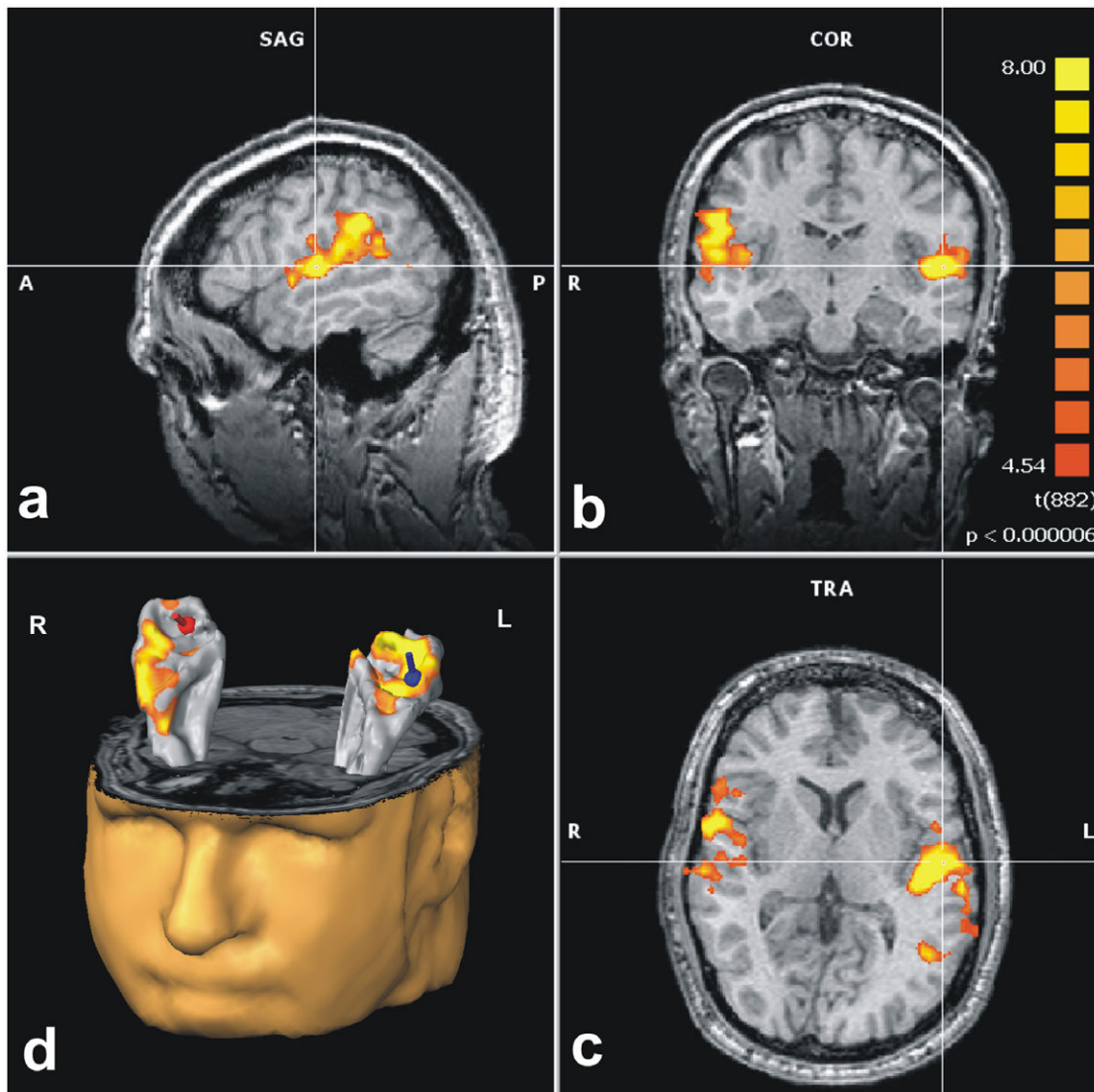


Figure 5. Bilateral fMRI activation of the auditory cortex including posterior duplications. Group BOLD activations of WS subjects in response to auditory stimulation are projected onto one individual WS brain in (a) sagittal, (b) coronal and (c) transverse planes. The cross line depicts the position of left HG. (d) Group BOLD-activations and MEG dipoles are projected onto an individual AC surface mesh. (A = anterior, P = posterior, R = right, L = left).

doi:10.1371/journal.pone.0012326.g005

therefore well applicable for WS subjects and children. Each tone pair consisted of two consecutive harmonic complex tones (duration 500 ms, 10 ms rise/fall time, inter-stimulus interval 250 ms). The test tones varied in number (2, 3, 4), height (low or high partials in relation to the fundamental) and averaged frequency of harmonics (low = 0.8, high = 1.5 kHz). Parameters of harmonics which characterize timbre (*e.g.* upper component frequency) were deliberately kept constant within a tone pair to minimize timbre changes. Subjects had to decide in a two-way forced choice task whether they perceived the second tone of a tone pair as higher or lower compared to the first. Alternatively, children could sing or hum the perceived sounds. The perceived direction of the tone shift was upward or downward, depending on the subject's dominant spectral (*SP*) or holistic (*H*) sound perception. An index of sound perception preference was then computed according to the number of *SP* versus *H* classifications, using the formula $\delta = (SP - H)/(SP + H)$. Accordingly, subjects were grouped into dominant spectral listeners ($\delta \geq 0$) or holistic listeners

($\delta < 0$) [1,2]. It is of note that the “holistic” listening mode was previously referred to as “fundamental” listening mode for reason of precise terminology at the time, since only the pitch component of sound perception was studied (independent of timbre differences) [1,2]. Statistical significance between groups was assessed using analysis of variance (ANOVA, significance level $p < 0.05$).

Magnetoencephalography (MEG)

Auditory evoked fields (AEFs) were recorded in response to characteristic instrumental tones (*e.g.* piano, organ, guitar, percussion, voice) and complex tones employing a Neuromag-122 whole-head MEG system. Subjects were instructed to passively listen to the sounds (total average of 900 instrumental and complex tones in pseudo-randomized order, tone length 500 ms, inter-stimulus interval range 400–600 ms). Cortical responses were individually analyzed with BESA program (MEGIS Software GmbH, Graefelfing) employing different models. In a first step the source activity of

the primary and secondary auditory cortex was modeled with one equivalent dipole in each hemisphere to separate the early P30–P50 response complex peaking 30–50 ms after tone onset from the later N100 response (**Fig. 1b**). A combined fit-seeding technique was employed with a fixed depth value of $|x| = 45$ mm, because the dipole depth is the weakest parameter in MEG dipole fitting and has a strong inverse correlation with dipole amplitude [1,3,48]. Signal strength was calculated for each peak relative to a 100 ms baseline. Latencies and amplitudes of the P50 (**Table 2**) were analyzed on an individual level and then averaged across groups. Dipole localization was determined averaging P50 responses to all auditory stimuli (**Table 2, Fig. 4a**). Statistical significance between groups was assessed using analysis of variance and multiple analyses of variance (ANOVA and MANOVA, significance level $p < 0.05$). In a second step we used spatiotemporal source modeling with two dipoles in each hemisphere to separate the characteristic responses from the primary core areas of anterior Heschl's gyrus from the secondary responses of the surrounding belt areas [3]: the first dipole within the center of the first HG (\approx primary AC, stereotactic Talairach coordinates $x = +/-45$, $y = -5$, $z = 10$) and the second dipole in the PT or the postero-lateral part of HG duplications, respectively (if present) (\approx secondary AC, coordinates $x = +/-55$, $y = -30$, $z = 10$). and fitted the orientation of the dipoles in all subjects. The resulting primary and secondary source waveforms are shown in **Fig. 1c,d**.

Magnetic resonance imaging (MRI) and morphometry

High-resolution T1-weighted three-dimensional MR images of the brain (magnetization-prepared rapid acquisition of gradient echo (MPRAGE) sequence: echo time = 3.47 ms, repetition time = 1930 ms, 1 mm³ isotropic resolution, flip angle 15°, 176 contiguous sagittal slices, matrix size 256 mm) were acquired at 3 Tesla (Magnetom, Siemens, Erlangen, Germany) with an 8-channel head coil. Additional T2-weighted sequences were obtained and assessed by a neuroradiologist (blind to diagnosis) for potential non-WS-related pathologies. MR morphometry was performed using semi-automated BrainVoyager segmentation software (Brain Innovation QX version 1.8). Images were corrected for inhomogeneity, transformed into anterior commissure-posterior commissure plane (ACPC) and subsequently normalized in Talairach space (TAL). Subsequent to removal of non-brain tissue from the images (*i.e.*, meninges, orbits), segmentation of the whole brain and three-dimensional surface reconstruction of auditory cortices was performed in standard ACPC space and after TAL normalization. To compare anatomical landmarks between groups, stereotactic Talairach (TAL) coordinates of individual AC were mapped and then plotted group-wise for comparison using Matlab (Mathworks, Natick, MA) (**Fig. 4a**). Probability maps of HG including local duplications anterior to the first complete Heschl's sulcus have been calculated. The number of overlapping voxels was color coded, *i.e.* red voxel represent $>80\%$ overlap of all brains under investigation (**Fig. 4b**).

Volumes of whole brain as well as left and right HG (with and without complete posterior duplications, if present) were determined according to individual intensity histograms (**Fig. 2,3,4c**)

References

- Schneider P, Sluming V, Roberts N, Scherg M, Goebel R, et al. (2005) Structural and functional asymmetry of lateral Heschl's gyrus reflects pitch perception preference. *Nat Neurosci* 8: 1241–1247.
- Schneider P, Wengenroth M (2009) Neural basis of individual holistic and spectral sound perception. *Contemp Mus Rev* 28: 315–328.
- Schneider P, Scherg M, Dosch HG, Specht HJ, Gutschalk A, et al. (2002) Morphology of Heschl's gyrus reflects enhanced activation in the auditory cortex of musicians. *Nat Neurosci* 5: 688–694.
- Peoples R, Franke Y, Wang YK, Perez-Jurado L, Paperna T, et al. (2000) A physical map, including a BAC/PAC clone contig, of the Williams-Beuren syndrome-deletion region at 7q11.23. *Am J Hum Genet* 66: 47–68.
- Antonell A, Del Campo M, Magano LF, Kaufmann L, de la Iglesia JM, et al. (2010) Partial 7q11.23 deletions further implicate GTF2I and GTF2IRD1 as the main genes responsible for the Williams-Beuren syndrome neurocognitive profile. *J Med Genet* 47: 312–320.

with a voxel-counting algorithm. The whole brain was defined as gray and white matter of the cerebrum, brain stem and cerebellum with the inferior boundary being the caudal end of cerebellar tonsils. Cerebrospinal fluid was not included into the calculation.

The supratemporal cortex (STG) was segmented on sagittal images in a semi-automated slice-by-slice approach according to established criteria [1,3] including Heschl's gyrus (HG), anterior supratemporal cortex (aSTG) and planum temporale (see **Fig. 2**). The HG is the most anterior transverse gyrus of STG located between the first transverse sulcus (FTS) and Heschl's sulcus (HS). In case of multiple gyration, transverse gyri posterior to the first HG were considered posterior duplications (D, **Fig. 2e,f**) if they were separated from HG by a complete HS. Often (but inconsistently) HG was indented by a local sulcus in its central, lateral or medial part (*i.e.* medial Heschl's sulcus, mHS as in **Fig. 2c**). For morphometric analysis, the subdivided HG was calculated including its various medial or lateral duplications anterior to the first complete HS. Occurring complete posterior duplications of HG were evaluated separately in morphometric and functional analysis in order to address the current controversy on their functional significance.

The PT is the plane cortical structure posterior to the HG. Its anterior border is the complete HS posterior to HG (**Fig. 2b,c**). In case of multiple complete posterior duplications the anterior border of PT was defined as the last complete transverse sulcus posterior to the duplications (**Fig. 2e,f**). The posterior border of PT was defined as the origin of the ascending ramus (if present), the medial border was the insular cortex and the inferior border was the supratemporal sulcus [49].

For the correct identification of PT, HG and occurring duplications a critical step was the visualization of sulcal boundaries. Three-dimensional surface reconstruction of auditory cortices allowed for reliable allocation of anatomical landmarks (**Fig. 2c**).

Block-designed fMRI was performed during auditory stimulation with different instrumental tones in analogy to MEG stimuli (EPI-sequences, 36 oblique slices parallel to the Sylvian fissure, slice thickness 3 mm, echo time = 30 ms, repetition time = 2500 ms). Subsequent to motion correction, alignment and TAL transformation, grouped functional maps were superimposed on a structural T1-weighted data set of one WS individual and the respective 3D-reconstructions of the AC using BrainVoyager software (Brain Innovation QX version 1.8; **Fig. 5**).

Acknowledgments

We would like to thank the families who participated in this study and the Bundesverband Williams Beuren Syndrom e.V. for their cooperation; Julia Reinhardt for technical assistance; Drs. Dmitri Tkachev, Thomas T. Hahn, Sabine Heiland, Christoph Stippich, Annemarie Seither-Preisler, and Mrs. Jenny Zettler for valuable comments on the manuscript.

Author Contributions

Conceived and designed the experiments: MW M. Blatow PS. Performed the experiments: MW M. Blatow PS. Analyzed the data: MW PS. Contributed reagents/materials/analysis tools: PS. Wrote the paper: MW M. Blatow. Assessed MR images, gave advice at all stages of the study and edited the manuscript: M. Bendszus.

6. Gao MC, Bellugi U, Dai L, Mills DL, Sobel EM, et al. (2010) Intelligence in Williams Syndrome is related to STX1A, which encodes a component of the presynaptic SNARE complex. *PLoS One* 5: e10292.
7. Bayes M, Magano LF, Rivera N, Flores R, Perez Jurado LA (2003) Mutational mechanisms of Williams-Beuren syndrome deletions. *Am J Hum Genet* 73: 131–151.
8. Meyer-Lindenberg A, Kohn P, Mervis CB, Kippenhan JS, Olsen RK, et al. (2004) Neural basis of genetically determined visuospatial construction deficit in Williams syndrome. *Neuron* 43: 623–631.
9. Martens MA, Wilson SJ, Reutens DC (2008) Research Review: Williams syndrome: a critical review of the cognitive, behavioral, and neuroanatomical phenotype. *J Child Psychol Psychiatry* 49: 576–608.
10. Levitin DJ, Cole K, Chiles M, Lai Z, Lincoln A, et al. (2004) Characterizing the musical phenotype in individuals with Williams Syndrome. *Child Neuropsychol* 10: 223–247.
11. Levitin DJ, Menon V, Schmitt JE, Eliez S, White CD, et al. (2003) Neural correlates of auditory perception in Williams syndrome: an fMRI study. *Neuroimage* 18: 74–82.
12. Levitin DJ, Bellugi U (1998) Musical abilities in individuals with Williams syndrome. *Music Perception* 15: 357–389.
13. Campbell LE, Daly E, Toal F, Stevens A, Azuma R, et al. (2009) Brain structural differences associated with the behavioural phenotype in children with Williams syndrome. *Brain Res* 1258: 96–107.
14. Galaburda AM, Bellugi U (2000) V. Multi-level analysis of cortical neuroanatomy in Williams syndrome. *J Cogn Neurosci* 12 Suppl 1: 74–88.
15. Martens MA, Reutens DC, Wilson SJ (2010) Auditory cortical volumes and musical ability in Williams syndrome. *Neuropsychologia*.
16. Dykens EM, Rosner BA, Ly T, Sagun J (2005) Music and anxiety in Williams syndrome: a harmonious or discordant relationship? *Am J Ment Retard* 110: 346–358.
17. Chiang MC, Reiss AL, Lee AD, Bellugi U, Galaburda AM, et al. (2007) 3D pattern of brain abnormalities in Williams syndrome visualized using tensor-based morphometry. *Neuroimage* 36: 1096–1109.
18. Reiss AL, Eckert MA, Rose FE, Karchemskiy A, Kesler S, et al. (2004) An experiment of nature: brain anatomy parallels cognition and behavior in Williams syndrome. *J Neurosci* 24: 5009–5015.
19. Reiss AL, Eliez S, Schmitt JE, Straus E, Lai Z, et al. (2000) IV. Neuroanatomy of Williams syndrome: a high-resolution MRI study. *J Cogn Neurosci* 12 Suppl 1: 65–73.
20. Schmitt JE, Watts K, Eliez S, Bellugi U, Galaburda AM, et al. (2002) Increased gyrification in Williams syndrome: evidence using 3D MRI methods. *Dev Med Child Neurol* 44: 292–295.
21. Thompson PM, Lee AD, Dutton RA, Geaga JA, Hayashi KM, et al. (2005) Abnormal cortical complexity and thickness profiles mapped in Williams syndrome. *J Neurosci* 25: 4146–4158.
22. Eckert MA, Galaburda AM, Karchemskiy A, Liang A, Thompson P, et al. (2006) Anomalous sylvian fissure morphology in Williams syndrome. *Neuroimage* 33: 39–45.
23. Gaser C, Luders E, Thompson PM, Lee AD, Dutton RA, et al. (2006) Increased local gyrification mapped in Williams syndrome. *Neuroimage* 33: 46–54.
24. Van Essen DC, Dierker D, Snyder AZ, Raichle ME, Reiss AL, et al. (2006) Symmetry of cortical folding abnormalities in Williams syndrome revealed by surface-based analyses. *J Neurosci* 26: 5470–5483.
25. Schmitt JE, Eliez S, Bellugi U, Reiss AL (2001) Analysis of cerebral shape in Williams syndrome. *Arch Neurol* 58: 283–287.
26. Marler JA, Elfenbein JL, Ryals BM, Urban Z, Netzloff ML (2005) Sensorineural hearing loss in children and adults with Williams syndrome. *Am J Med Genet A* 138: 318–327.
27. Marler JA, Sitovsky JL, Mervis CB, Kistler DJ, Wightman FL (2010) Auditory function and hearing loss in children and adults with Williams syndrome: cochlear impairment in individuals with otherwise normal hearing. *Am J Med Genet C Semin Med Genet* 154C: 249–265.
28. Thornton-Wells TA, Cannistraci CJ, Anderson AW, Kim CY, Eapen M, et al. (2010) Auditory attraction: activation of visual cortex by music and sound in Williams syndrome. *Am J Intellect Dev Disabil* 115: 172–189.
29. Jarvinen-Pasley A, Pollak SD, Yam A, Hill KJ, Grichanik M, et al. (2010) Atypical hemispheric asymmetry in the perception of negative human vocalizations in individuals with Williams syndrome. *Neuropsychologia* 48: 1047–1052.
30. Holinger DP, Bellugi U, Mills DL, Korenberg JR, Reiss AL, et al. (2005) Relative sparing of primary auditory cortex in Williams Syndrome. *Brain Res* 1037: 35–42.
31. Leonard CM, Eckert MA, Kuldau JM (2006) Exploiting human anatomical variability as a link between genome and cognome. *Genes Brain Behav* 5(Suppl 1): 64–77.
32. Gaser C, Schlaug G (2003) Gray matter differences between musicians and nonmusicians. *Ann N Y Acad Sci* 999: 514–517.
33. Pantev C, Lutkenhoner B (2000) Magnetoencephalographic studies of functional organization and plasticity of the human auditory cortex. *J Clin Neurophysiol* 17: 130–142.
34. Zatorre RJ, Belin P (2001) Spectral and temporal processing in human auditory cortex. *Cereb Cortex* 11: 946–953.
35. Hyde KL, Peretz I, Zatorre RJ (2008) Evidence for the role of the right auditory cortex in fine pitch resolution. *Neuropsychologia* 46: 632–639.
36. Gothelf D, Farber N, Raveh E, Apter A, Attias J (2006) Hyperacusis in Williams syndrome: characteristics and associated neuroaudiologic abnormalities. *Neurology* 66: 390–395.
37. Geschwind N, Levitsky W (1968) Human brain: left-right asymmetries in temporal speech region. *Science* 161: 186–187.
38. Steinmetz H (1996) Structure, functional and cerebral asymmetry: in vivo morphometry of the planum temporale. *Neurosci Biobehav Rev* 20: 587–591.
39. Morosan P, Rademacher J, Schleicher A, Amunts K, Schormann T, et al. (2001) Human primary auditory cortex: cytoarchitectonic subdivisions and mapping into a spatial reference system. *Neuroimage* 13: 684–701.
40. Rademacher J, Morosan P, Schormann T, Schleicher A, Werner C, et al. (2001) Probabilistic mapping and volume measurement of human primary auditory cortex. *Neuroimage* 13: 669–683.
41. Formisano E, Kim DS, Di Salle F, van de Moortele PF, Ugurbil K, et al. (2003) Mirror-symmetric tonotopic maps in human primary auditory cortex. *Neuron* 40: 859–869.
42. Patterson RD, Uppenkamp S, Johnsrude IS, Griffiths TD (2002) The processing of temporal pitch and melody information in auditory cortex. *Neuron* 36: 767–776.
43. Seifritz E, Esposito F, Hennel F, Mustovic H, Neuhoff JG, et al. (2002) Spatiotemporal pattern of neural processing in the human auditory cortex. *Science* 297: 1706–1708.
44. Liegeois-Chauvel C, Musolino A, Chauvel P (1991) Localization of the primary auditory area in man. *Brain* 114(Pt 1A): 139–151.
45. Leonard CM, Voeller KK, Lombardino LJ, Morris MK, Hynd GW, et al. (1993) Anomalous cerebral structure in dyslexia revealed with magnetic resonance imaging. *Arch Neurol* 50: 461–469.
46. Warrier C, Wong P, Penhune V, Zatorre R, Parrish T, et al. (2009) Relating structure to function: Heschl's gyrus and acoustic processing. *J Neurosci* 29: 61–69.
47. Bundesverband Williams Beuren Syndrom e.V. (accessed 2010) <http://www.wb-s.de>.
48. Scherg M, Buchner H (1993) Somatosensory evoked potentials and magnetic fields: separation of multiple source activities. *Physiol Meas* 14(Suppl 4A): A35–39.
49. Westbury CF, Zatorre RJ, Evans AC (1999) Quantifying variability in the planum temporale: a probability map. *Cereb Cortex* 9: 392–405.